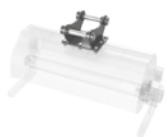




ROAD LINE

SE

# EXCAVATOR SWEEPER



**BOLTED  
COUPLING  
PLATE**



**MAXIMUM  
PRESSURE  
VALVE**  
to protect  
the hydraulic engine  
from pressure peaks



**STABILIZING  
FEET**  
usable at rest  
and removable



**ZIG-ZAG  
RINGS**  
Ø 550 in  
polypropylene  
or steel



**HYDRAULIC  
ENGINE  
WITH DIRECT  
DRIVE**


The excavator sweeper can be applied to all types of excavators and is useful for **sweeping roads, construction sites, tracks and parking lots** from gravel, earth or snow.

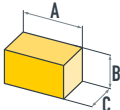
The **brush roller** is composed, in the standard version, of **zigzag rings in polypropylene** with a steel core; on request it is possible to make the brush roller composed of 50% **polypropylene** rings and 50% steel rings, alternating, **suitable for more demanding jobs** or in the presence of wet

asphalt, encrusted material and much more.

It has **stabilizing feet** that protect the brushes from bending during positioning on the ground, thus helping to **maintain high sweeping quality** over time.

Resistant, the engine is equipped with a **maximum pressure valve** that **optimizes** the performance of the engine and **protects** it from pressure peaks, increasing its operating life.

| Model   |        | SE 80       | SE 125      |
|---|--------|-------------|-------------|
| Technical data  | um     |             |             |
| Working width   | mm     | 800         | 1250        |
| Total width   | mm     | 1000        | 1450        |
| Oil flow min-max  | lt/min | 20-30       | 25-35       |
| Oil pressure min-max  | bar    | 160-240     | 160-240     |
| Weight standard configuration   | kg     | 130         | 190         |
| Broom   | Ø mm   | 550 x n. 18 | 550 x n. 28 |
|  | ton    | 2,5-6,0     | 5,0-10,0    |
|   | ton    | 6,0-9,0     | 8,0-10,0    |

|   |  |      |     |     |
|---|--|------|-----|-----|
|  | Overall size<br>in standard<br>configuration | A cm | 100 | 145 |
|   |  | B cm | 69  | 69  |
|   |  | C cm | 63  | 63  |
|   |  |      |     |     |